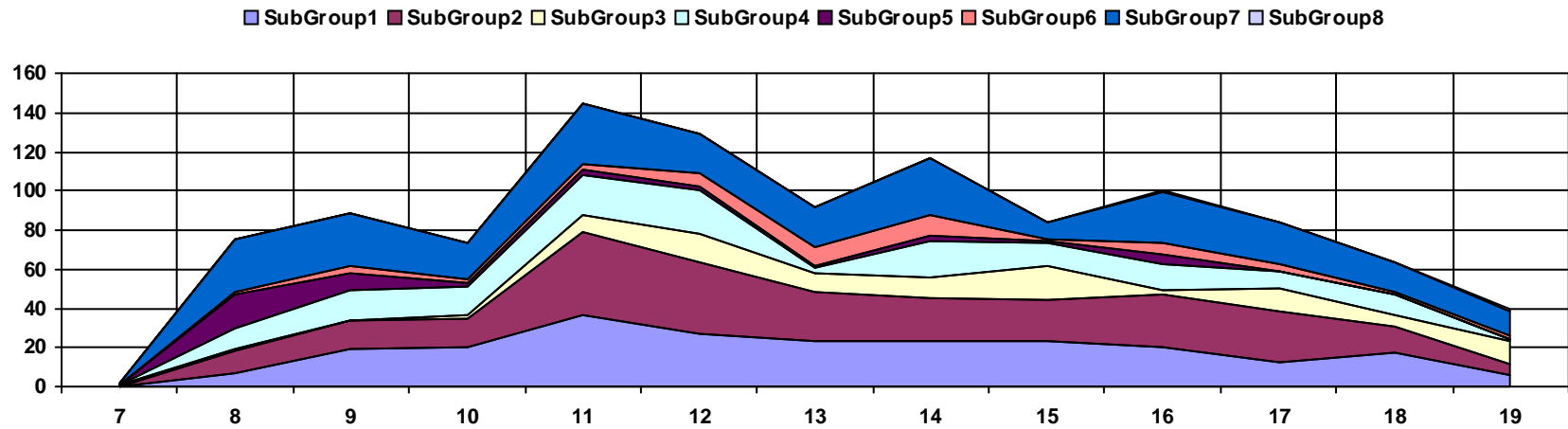


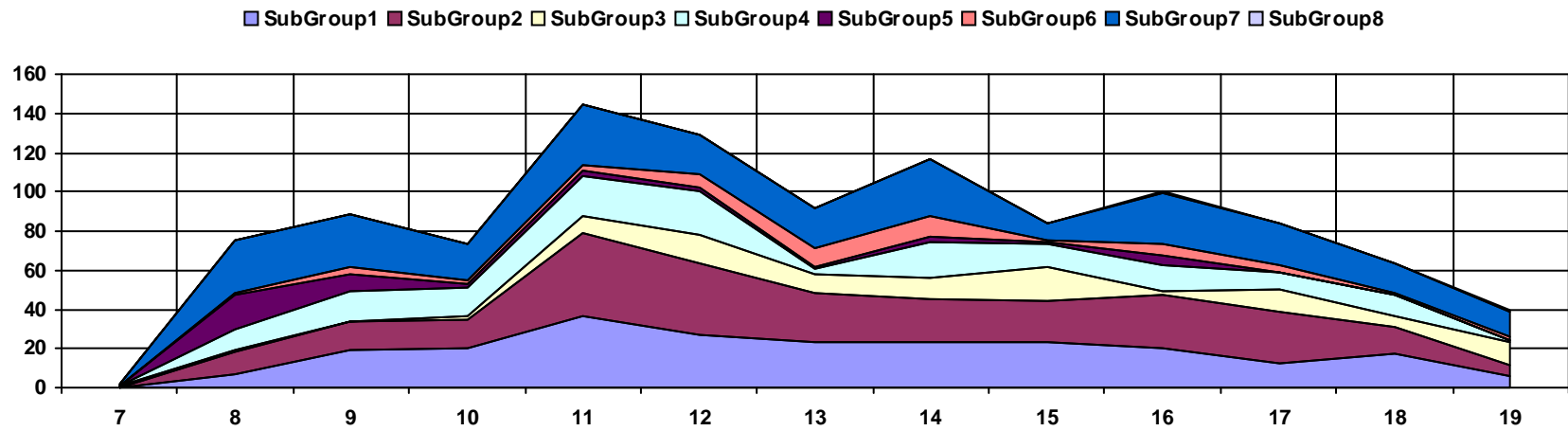


UM Outgoing and Incoming Call Summary for 2/28/2008

of calls are shown for the hour i.e. Calls for 19:00 are from 19:00 to 19:59



<i>Group</i>	<i># of Calls</i>	<i># VM Calls</i>	<i>Avg Talk Time in Seconds</i>	<i>Avg Dur in Seconds</i>	<i>Total Dur in Minutes</i>
<i>Remote_WorkGroup1</i>					
<i>SubGroup1</i>	72	17	98	117	140
<i>SubGroup2</i>	234	35	80	101	393
<i>WorkGroup1</i>					
<i>SubGroup1</i>	163	29	63	82	223
<i>SubGroup2</i>	27	7	26	48	22
<i>SubGroup3</i>	96	18	41	94	151
<i>SubGroup4</i>	148	35	38	86	211



<i>Group</i>	<i># of Calls</i>	<i># VM Calls</i>	<i>Avg Talk Time in Seconds</i>	<i>Avg Dur in Seconds</i>	<i>Total Dur in Minutes</i>
<i>SubGroup5</i>	42	15	51	71	50
<i>SubGroup6</i>	51	5	177	194	165
<i>SubGroup7</i>	259	53	87	114	490
<i>SubGroup8</i>	2	0	78	86	3